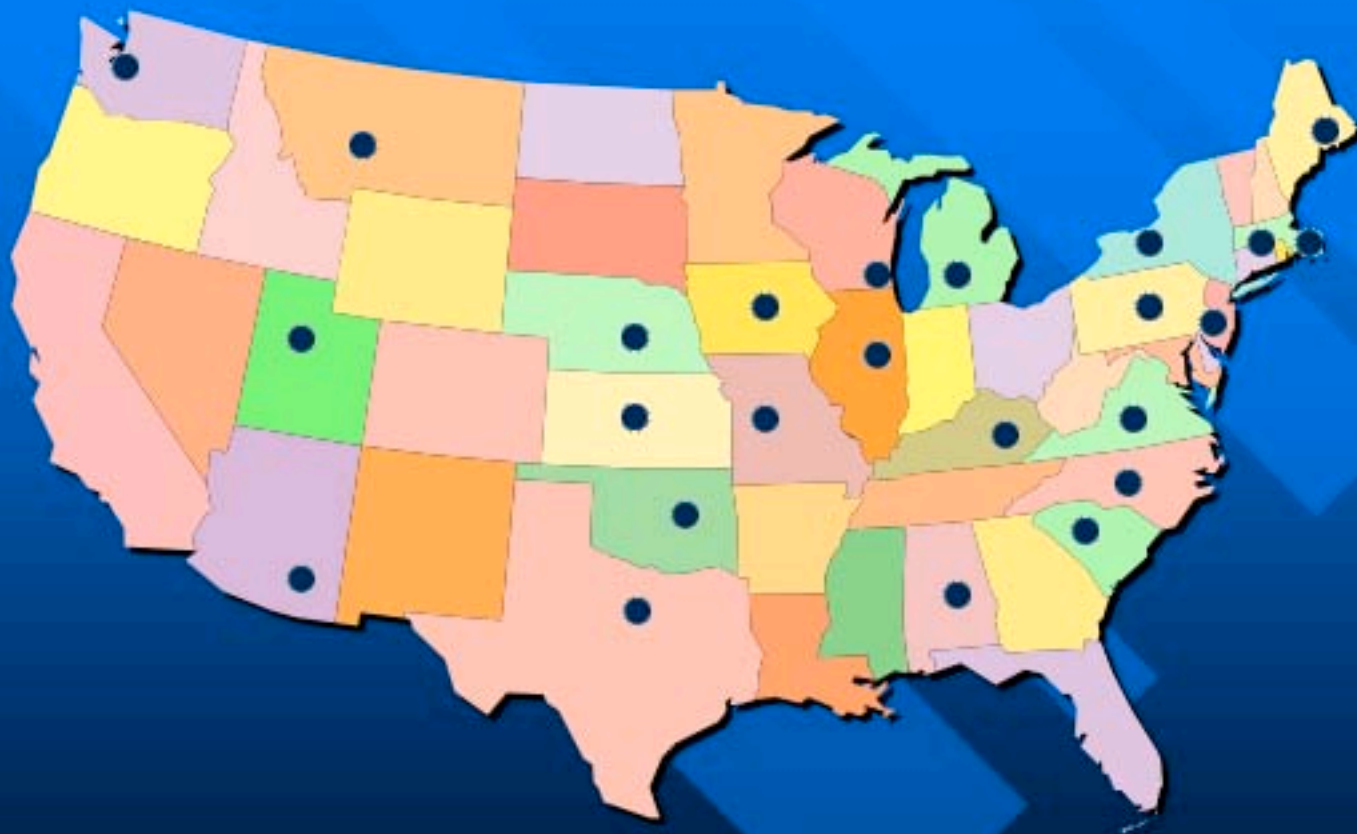


BENT & BERMUDA

***NEW
CULTIVARS
FOR
PUTTING
GREENS***



OFFICIAL TRIAL LOCATIONS



1998 NATIONAL BENTGRASS PUTTING GREEN TEST
ESTABLISHED FALL 1998, USE 1999
DATA

ON-SITE TRIAL LOCATIONS



**USGA, GCSAA, NTEP ON-SITE TESTS
BENTGRASS & BERMUDAGRASS
ESTABLISHED FALL 1997/SPRING 1998**

OFFICIAL vs. ON-SITE

- UNIVERSITY RESEARCH SITES
 - MANAGEMENT PRESCRIBED BY NTEP
 - GENERALLY, NO TRAFFIC
 - DISEASES ARE ENCOURAGED AND SOMETIMES INOCULATED
 - SAND-BASED AND SOIL SITES ARE UTILIZED
 - COMMERCIALY AVAILABLE AND EXPERIMENTAL ENTRIES
- GOLF COURSE PRACTICE AREAS
 - MANAGEMENT DETERMINED BY SUPT.
 - TRAFFIC IS ENCOURAGED
 - MOSTLY PREVENTATIVE DISEASE CONTROL, CONTROL IS NECESSARY
 - USGA-SPEC SAND GREENS BUILT IN 1997
 - COMMERCIALY AVAILABLE ENTRIES ONLY

BENTGRASS ENTRIES

OFFICIAL & ON-SITE TESTS

L-93, CRENSHAW, PENNCROSS
BACKSPIN, PROVIDENCE
SR 1119, CENTURY, IMPERIAL
PENN A-1, A-4, G-1, G-6

ON-SITE TEST ONLY

PUTTER, CATO, GRAND PRIX
TRUELINE, SR 1020, VIPER

OFFICIAL TEST ONLY

CREEPING

ABT-CRB-1, ISI-AP-5
BAR CB 8US3, PENN A-2
BAR AS 8FUS2, SRX 1120
SRX 1BPAA, SRX 1NJH
PST-A2E, PENNLINKS
SYN 96-1, SYN 96-2, SYN 96-3
PICK CB 13-94

VELVET

BAVARIA, PICK MVB
SR 7200

BENTGRASS ESTABLISHMENT

% ESTABLISHMENT

SEEDLING VIGOR

TOP STATISTICAL GROUP

TOP STATISTICAL GROUP

A-2, L-93, A-4, BACKSPIN

A-4, A-2, G-1, A-1

PENNCROSS, A-1, G-6

2ND STATISTICAL GROUP

CRENSHAW, SYN 96-1

BACKSPIN, CRENSHAW

PENNCROSS, SYN 96-1

1998 NATIONAL BENTGRASS PUTTING GREEN TEST — 1999 DATA

BENTGRASS TURFGRASS QUALITY

**SAND GREENS:
14 LOCATIONS**

**SOIL GREENS:
10 LOCATIONS**

TOP STATISTICAL GROUP

TOP STATISTICAL GROUP

**A-4, A-1, A-2
SYN 96-1, SYN 96-3, G-2
L-93, PST-A2E**

**A-4, A-1, A-2
G-6, SYN 96-2**

**1998 NATIONAL BENTGRASS PUTTING GREEN TEST –
1999 DATA**

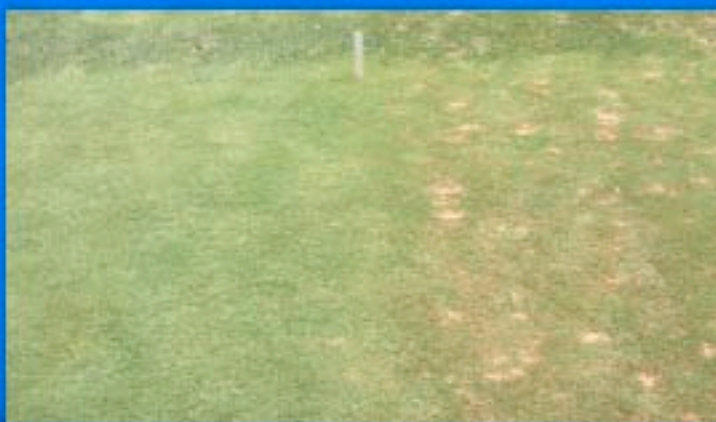
BENTGRASS QUALITY BY NITROGEN LEVEL

2.0-4.0 LBS.	4.1-6.0 LBS.	6.1+ LBS.
<i>A-1</i>	<i>A-4</i>	<i>A-4, G-1, A-1</i>
A-2	SYN 96-3	PROVIDENCE
<i>A-4</i>	<i>A-1</i>	BAR AS 8FUS2
SYN 96-1	<i>L-93</i>	ISI-AP-5
<i>G-1</i>	SYN 96-1	SRX 1120, <i>L-93</i>
G-6	<i>G-1</i>	A-2, SRX 1BPAA
SYN 96-2	SYN 96-2	BAR CB 8US3
SYN 96-3	ABT-CRB-1	PST-A2E
<i>L-93</i>	G-6	IMPERIAL

**1998 NATIONAL BENTGRASS PUTTING GREEN TEST –
1999 DATA**

BENTGRASS DISEASE EVALUATIONS

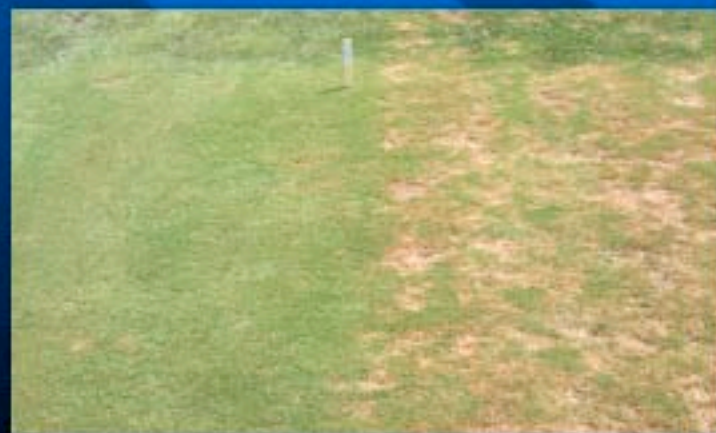
DOLLAR SPOT



L-93

SPRAYED

UNSPRAYED



CENTURY

BENTGRASS QUALITY – REDUCED FUNGICIDE USE

THREE LOCATIONS:

LEXINGTON, KY; KINGSTON, RI, PUYALLUP, WA

TOP STATISTICAL GROUP

A-1, A-2, L-93, A-4

2ND STATISTICAL GROUP

G-1, G-6, PST-A2E, PICK MVB

***1998 NATIONAL BENTGRASS PUTTING GREEN TEST –
1999 DATA***

BENTGRASS CHARACTERISTICS

GENETIC COLOR

TOP STATISTICAL GROUP

L-93

SRX 1BPAA

SRX 1NJH

PST-A2E

SRX 1120

CRENSHAW

A-2

SYN 96-2

DENSITY (SUMMER)

TOP STATISTICAL GROUP

SYN 96-3, PICK MVB

SR 7200, SYN 96-1, A-1

ABT-CRB-1, SYN 96-2

DENSITY (FALL)

TOP STATISTICAL GROUP

A-1, PICK MVB

A-2, SR 7200

ON-SITE TESTS



**ESTABLISHED IN FALL
1997
OR SPRING 1998**

**PRACTICE GREENS
MAINTAINED BY
SUPT.**



ON-SITE LOCATIONS: BENTGRASS

COURSE	LOCATION	SUPT.
CRYSTAL SPRINGS	BURLINGAME, CA	RAY DAVIES
FOX HOLLOW	LAKWOOD, CO	BRUCE NELSON
LASSING POINTE	FLORENCE, KY	JERRY COLDIRON
NORTH SHORE	GLENVIEW, IL	DAN DINELLI
PURDUE UNIV.	W. LAFAYETTE, IN	JIM SCOTT
SNOQUALMIE RIDGE	SNOQUALMIE, WA	TOM WOLFF
WESTCHESTER CC	RYE, NY	JOE ALONZI
WESTWOOD GC	VIENNA, VA	WALTER MONTROSS

ON-SITE LOCATIONS: BENT/BERMUDA

COURSE	LOCATION	SUPT.
BENT TREE CC	DALLAS, TX	KEITH IHMS
CC OF BIRMINGHAM	BIRMINGHAM, AL	LEE MCLEMORE
CC OF GREEN VALLEY	GREEN VALLEY, AZ	MIKE BATES
THE MISSOURI BLUFFS	ST. CHARLES, MO	MIKE VOGT
SCGA MEMBERS CLUB	MURRIETA, CA	JOHN MARTINEZ

ON-SITE BENTGRASS

THIRTEEN LOCATIONS: OVERALL MEAN

TOP STATISTICAL GROUP

A-4

2ND STATISTICAL GROUP

A-1, G-1, CENTURY, GRAND PRIX

ON-SITE BENTGRASS PUTTING GREEN TEST – 1999 DATA

STIMPMETER - BENTGRASS

27 RATINGS

NO SIGNIFICANT
DIFFERENCE

19 RATINGS

ONLY TOP AND
BOTTOM ENTRIES
SIGNIFICANTLY
DIFFERENT

4 RATINGS



CORRELATION WITH
DENSITY

NO CORRELATION TO
WEAKLY CORRELATED